

Scopepad-LX116

Continuing to enjoy spectacular growth, We launched the Retina Display, a powerful accessory for the acclaimed HDMI camera.

The display, featuring full HD (1080x1920) resolution, provides high fidelity images from the HDMI camera .

Only click mouse, the user can access Display menus to take picture, record video and saves images to SD card for subsequent offline analysis. All this is achieved without the need for a PC.



Display Specifications		
DISPLAY	SCREEN SIZE	11.6inch
	ASPECT RATIO	16:9
	DISPLAY RESOLUTION	1920*1080
	DISPLAY TYPE	IPS-PRO
	BRIGHTNESS	320cd/m2
	STATIC CONTRAST RATIO	1000:1
INPUT	HDMI PORT	1
POWER	TYPE	External Adaptor
	POWER SUPPLY TYPE	12V,2A
DIMENSIONS	PRODUCT DIMENSIONS	282.0*180.5*15.3mm

5MP HDMI Camera

Built-in Mouse Control Camera

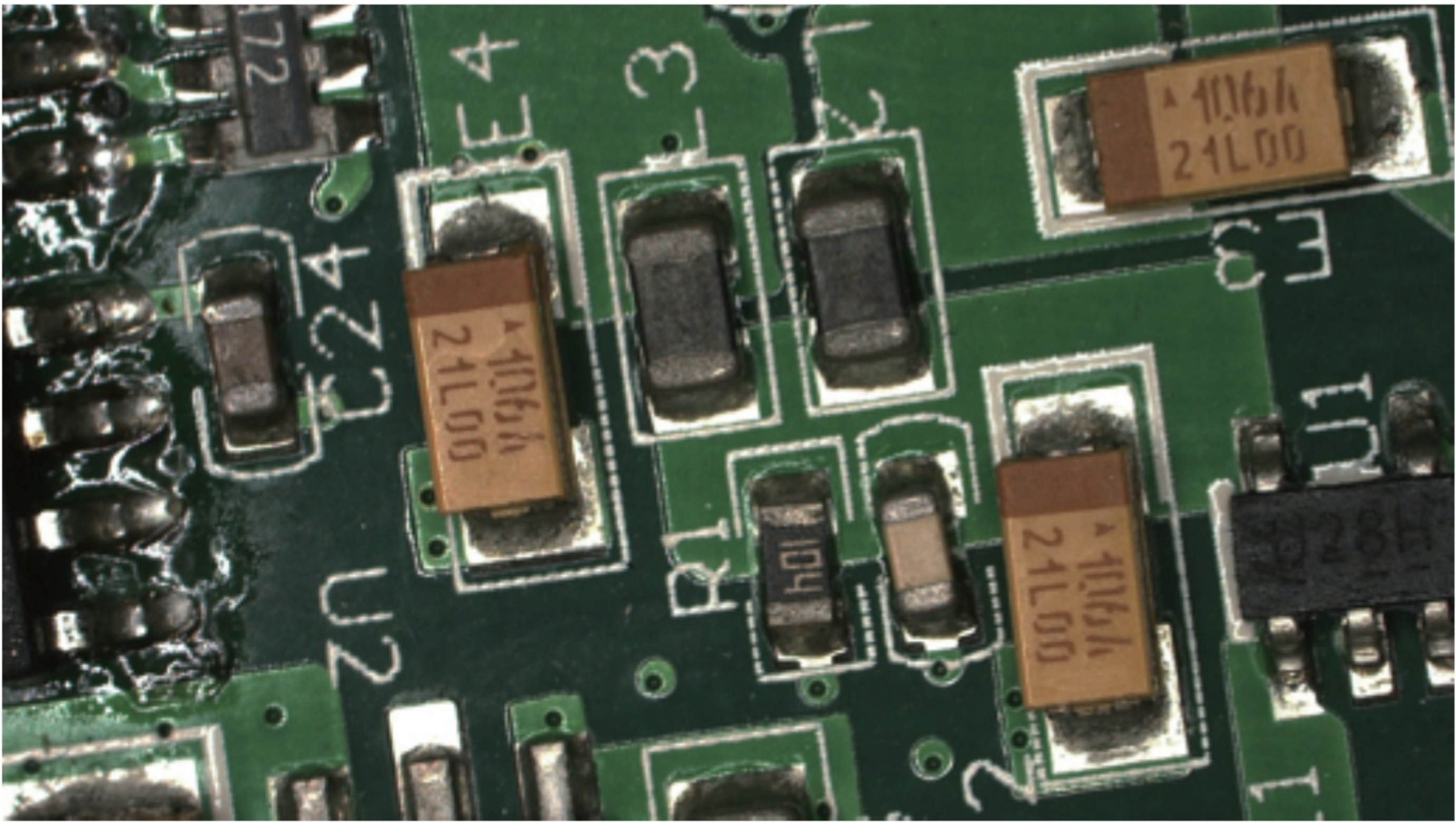
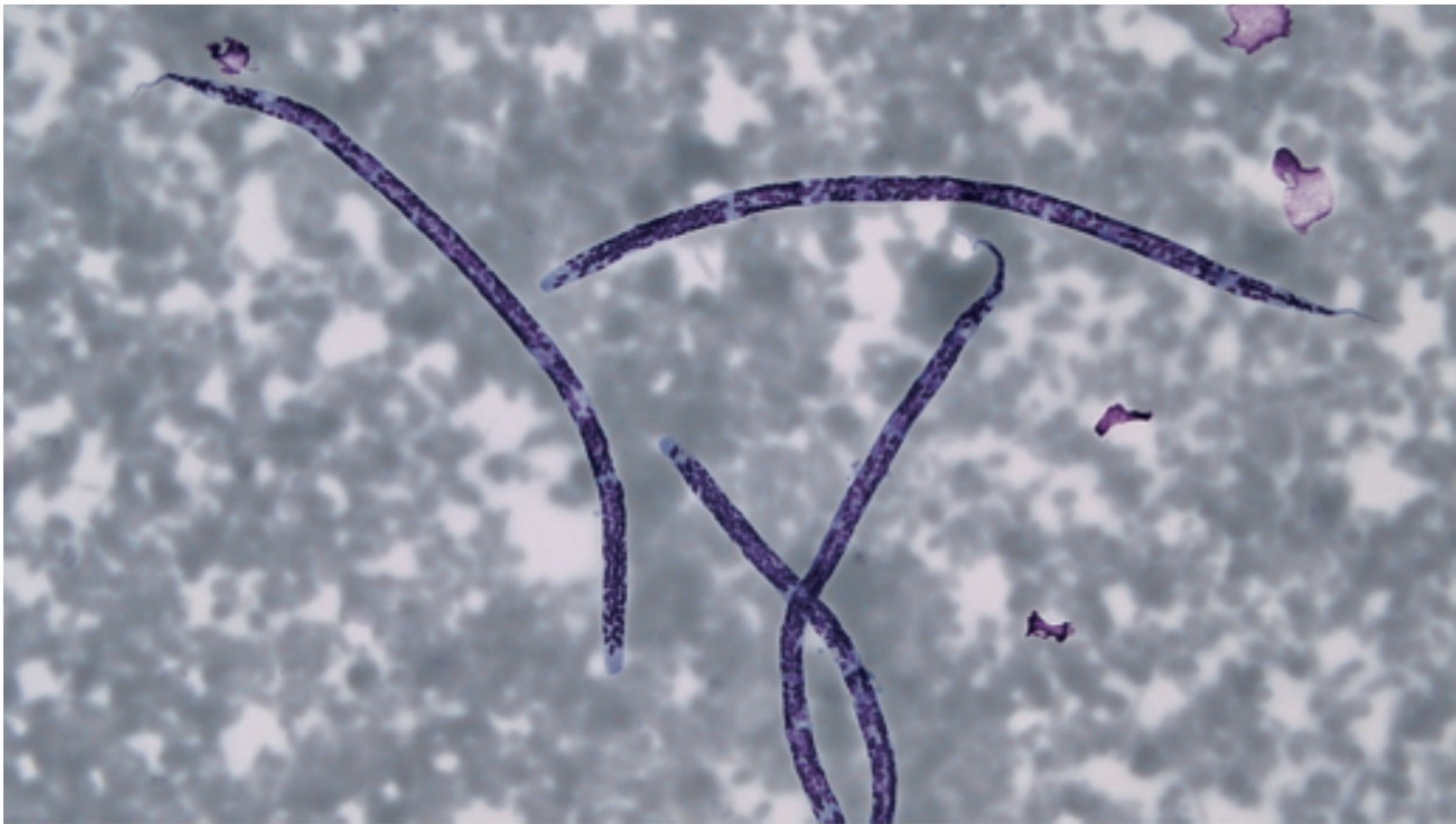


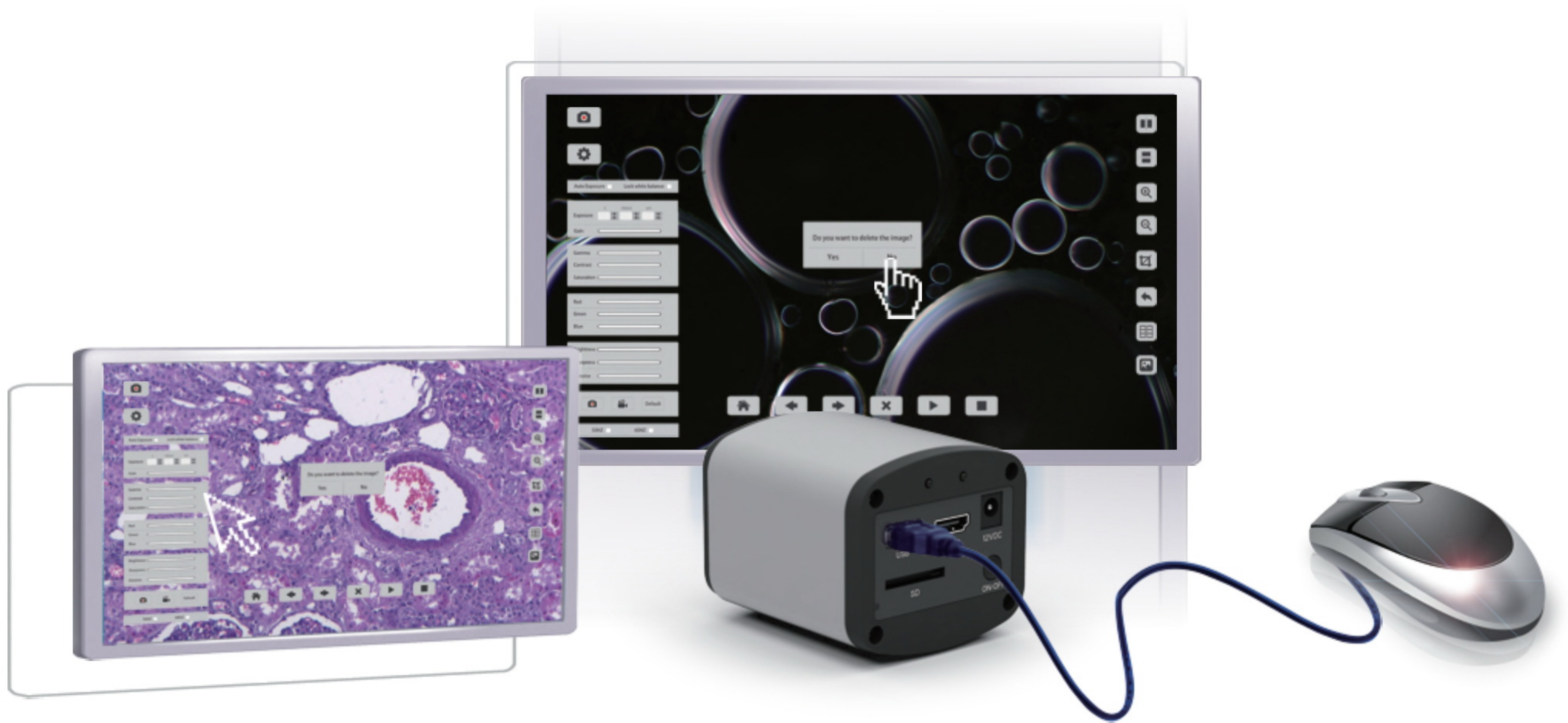
HD camera with c-mount interface that provides a full high-definition live image and a standard capture resolution of 5Mpixels.

It can connect to monitor with HDMI port directly, and user can operate it easily and capture images, record video to the SD card directly. No PC is needed.

The camera’s design is so user-friendly, even a new user can operate it within seconds.

	HDMI Camera specification
Sensor	Aptina MT9P031
Sensor size	1/2.5inch
Pixel size	2.2um x 2.2um
Preview resolution	1920 ×1080
Capture resolution	2592 ×1944
Frame rate	1920 ×1080 15fps via USB2.0
	1920 ×1080 15fps via HDMI
Capture	SD card(4G)
Video recording	1080p 15fps @ SD Card
	1080p 15fps @ PC
Exposure time	0.001s-10s
Exposure	Automatic & Manual
White balance	Automatic
Settings	Gain, Gamma, Saturation, Contrast
Built-in software	Cloud 1.0 ver
PC software	ISCapture
Interface1	USB2.0
Interface2	HDMI
Compatible OS	xp,win7/8(32/64bit), MAC OSX
Optical port	Standard C-mount(Aluminium)
Power Supply	DC 12V /2A
Operational temperature	0-60 C
Humidity	45%-85%
Storage temperature	-20-70 C
Dimension	74.4*67.2*90.9mm
Weight	1kg





Main Features:

1. Built-in mouse control: The user can control the camera by a mouse directly.
2. Superb Smart Camera:
The HDMI camera can automatically analyze the acquired image, optimize the white balance and exposure time to present the perfect images.
3. Pure and gracefully image quality.
4. HDMI and USB two outputs.
5. Powerful ISCapture measurement Software when use USB output.
6. When use HDMI output:
Directly take image & record video to SD card by a mouse directly.
Detail parameter setting, includes Exposure, White Balance, Gain, Gamma, Contrast, Saturation, Brightness, Sharpness, Denoise, Flip, Zoom in/out and Cross function etc.
Image Comparison function.
7. Fast Live Image.
8. Support Winxp/7/8(32/64bit), MAC OSX.
9. Standard C-mount camera and easy to connect to any microscope.
10. 2 years Warranty

Application:

Scientific research
 Education
 Life Science
 Material Science
 Industrial Detection (like PCB board and semiconductor examination)
 Medical Research